


Company Presentation


September 2011



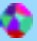
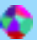

Agenda

- 
- 1 Who we are
 - 2 Products
 - 3 Solutions

Who We Are

 is a private Romanian software vendor and consultancy company focused on reliably ensuring the exchange of value-related messages

More to the point, Allevo delivers innovative solutions and services for real-time transactions processing, empowering financial institutions and corporations to:

-  improve / re-structure / centralize their financial transactions systems
-  align transactions to international standards
-  automate the transactions flow

Profile

SWIFT Ready Application Provider



Ready Application
Workers' Remittances 2011



Ready Application
SEPA 2009

qPayIntegrator

Real-time transactions processing

Esfera

Process and resource management

FMA

Business continuity

SWIFT Ready Service Provider

Implementation & Integration 2011



Ready Services
Implementation & Integration 2011
Romania

Solution Experts

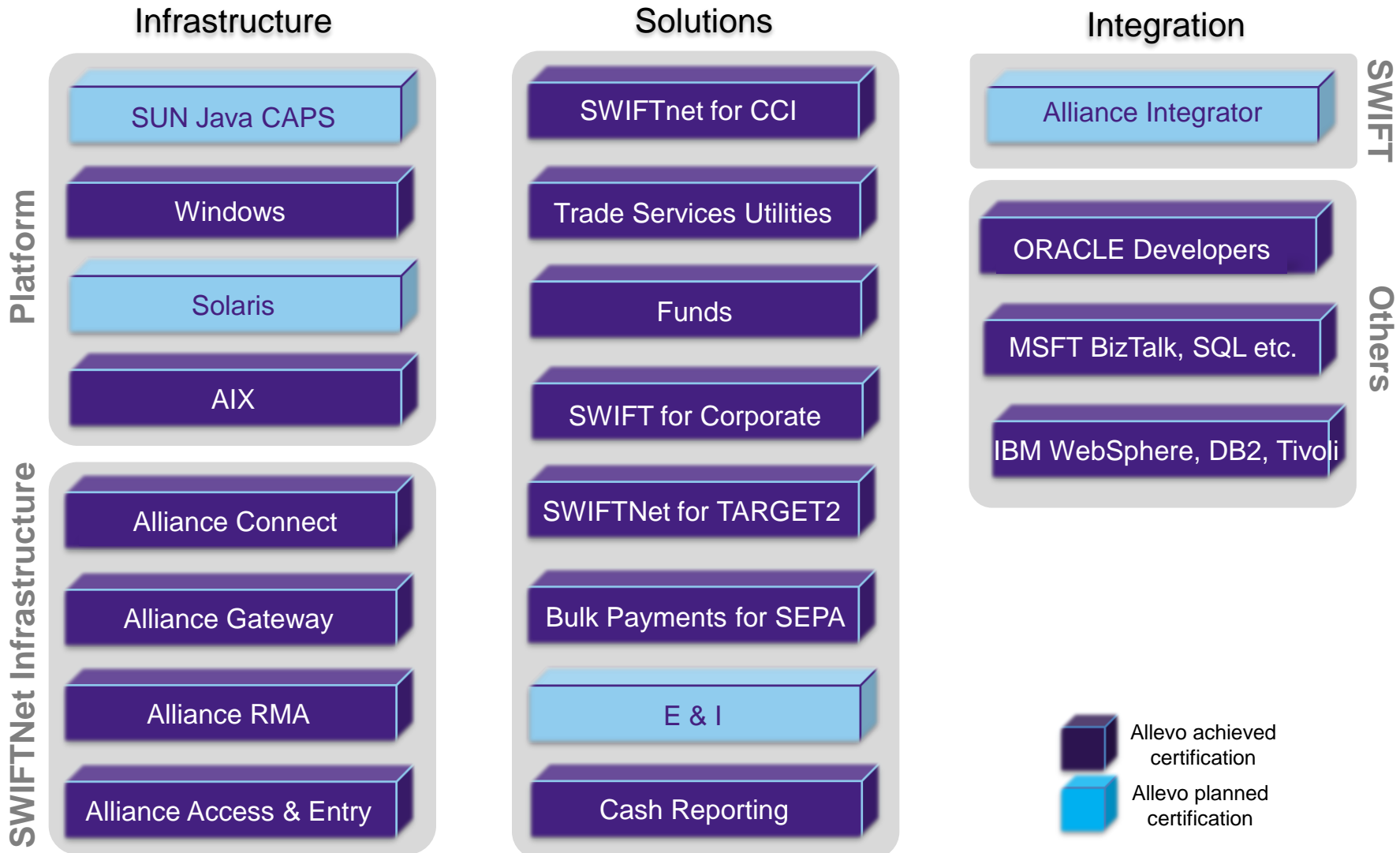
Business analysts

Technical Experts

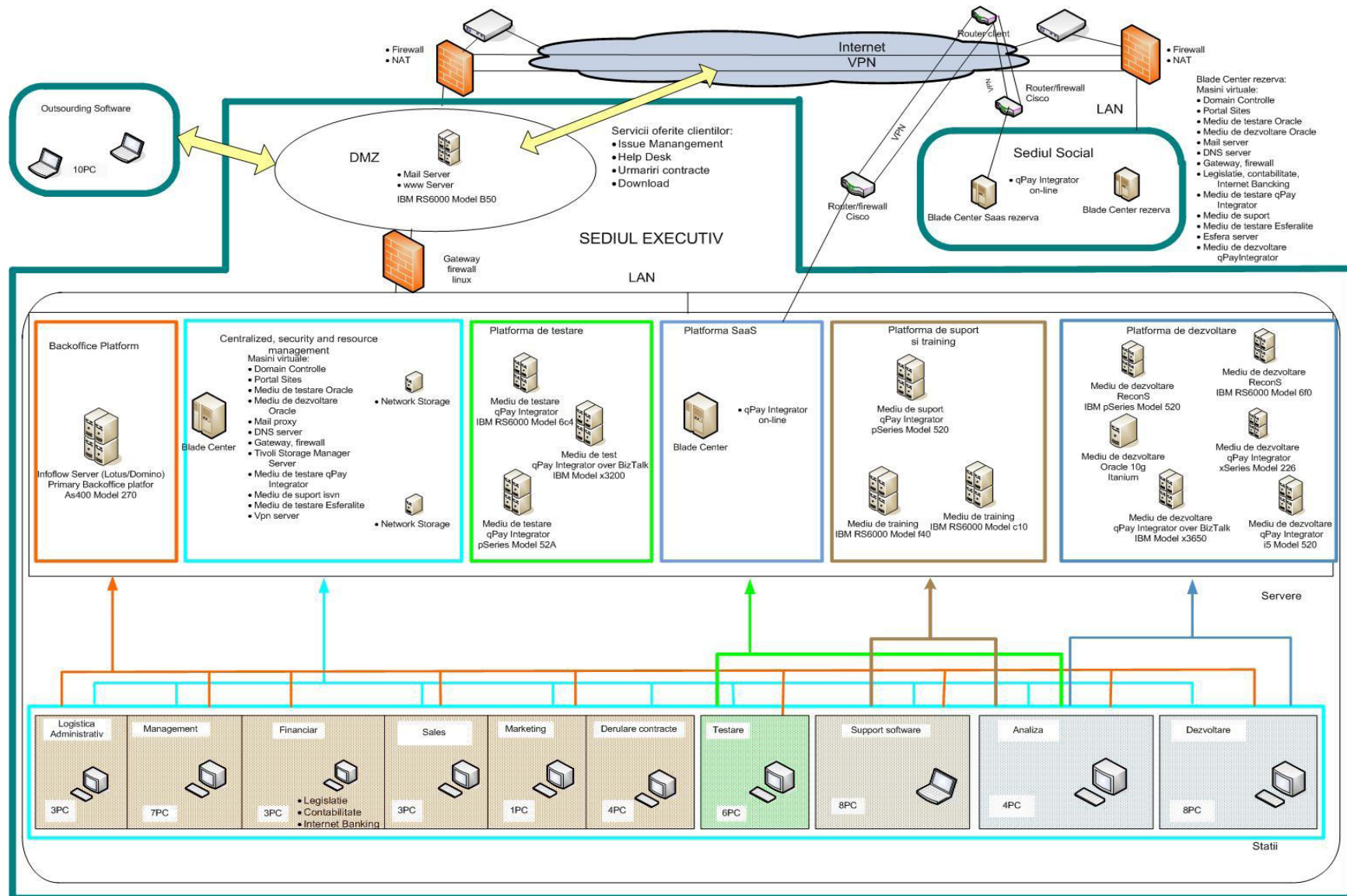
Implementation engineers



Expertise



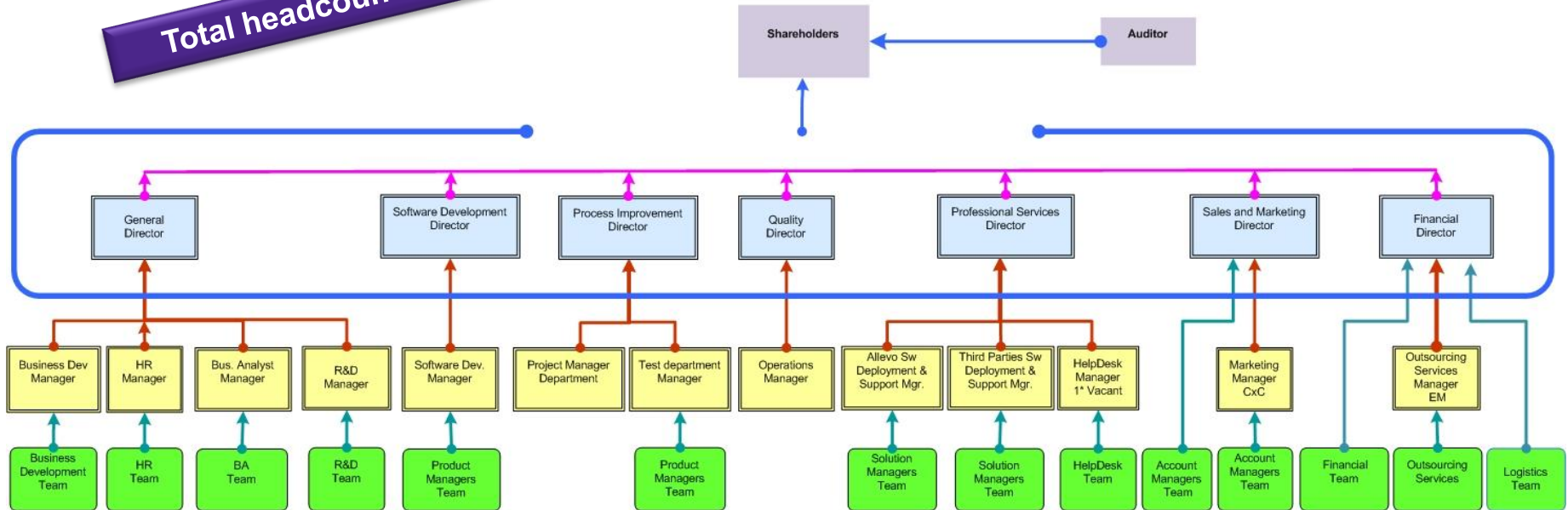
Infrastructure



Organization

ORGANIZATIONAL CHART

Total headcount: 56+



Allevo process improvement

- ❑ ISO 9001/2008 certified since 2002
- ❑ Capability Maturity Model® Integration (CMMI) V1.2. Level 2 since 2009
- ❑ Evaluation of conformity with Level 3 of the Capability Maturity Model® Integration (CMMI) V 1.3. in 2012

Clients

Romania

Banks

- Alpha Bank
- Anglo- Romanian Bk
- ATE Bank
- Banca Italo-Romena
- Banca Romaneasca
- Bancpost
- BC Feroviara
- BCR Erste Group
- BLOM Bank Egypt
- BRD Soc Gen
- CEC Bank
- Credit Europe Bank
- Creditcoop
- EXIMBANK
- ING Bank
- Intesa San Paolo
- Libra Bank
- Marfin Bank
- MKB Romexterra
- Piraeus Bank
- PORSCHE Bank
- Raiffeisen Bank
- RIB
- Volksbank

Insurance Co.

- AIG Life Insurance
- Generali Asigurari
- Interamerican
- Nederlanden Romania

Corporates

- Auchan
- Carrefour Romania
- Delta
- Heineken
- IBM Global Services
- IBM World Trade Corp.
- Joe IDC
- MGV Distri-Hiper
- Nestle
- Wrigley

Government Institutions

- Romanian Ministry of Public Finance

Market Infrastructures

- Central Depository
- TransFond

Europe

Bulgaria

- National Bank Bulgaria

Slovakia

- Vseobecna Uverova Bank

Moldavia

- FinComBank
- Moldova Agroindbank
- Moldincon Bank
- National Bank Moldavia
- Romanian Commercial Bank
- Savings Bank
- Social Bank
- Unibank
- Universal Bank
- Victoria Bank

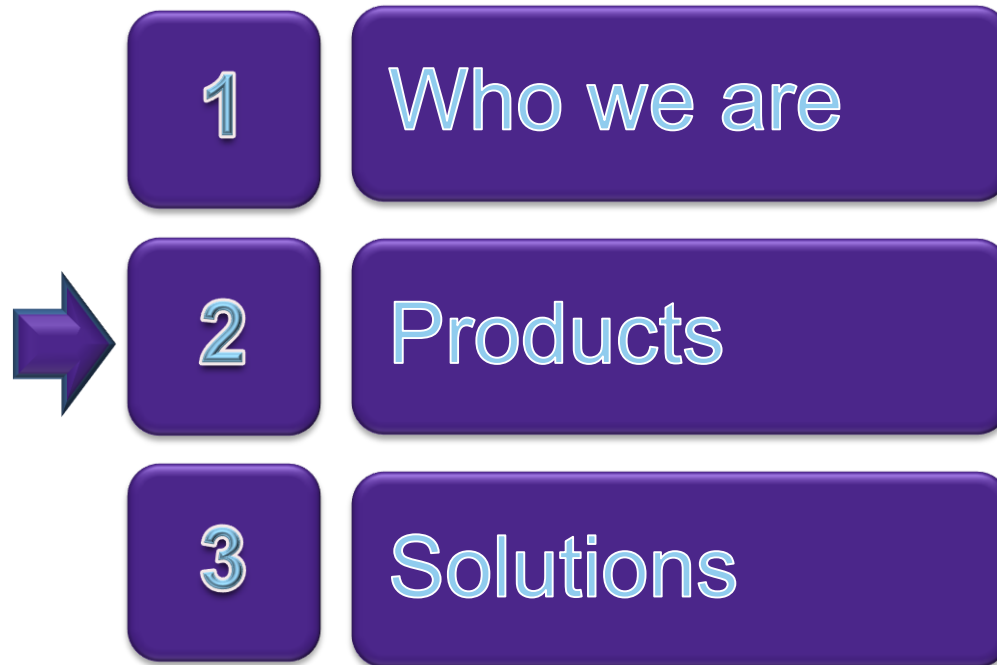
Italy

- International Fund for Agricultural Development

The Netherlands

- Musoni BV

Agenda

- 
- 1 Who we are
 - 2 Products
 - 3 Solutions

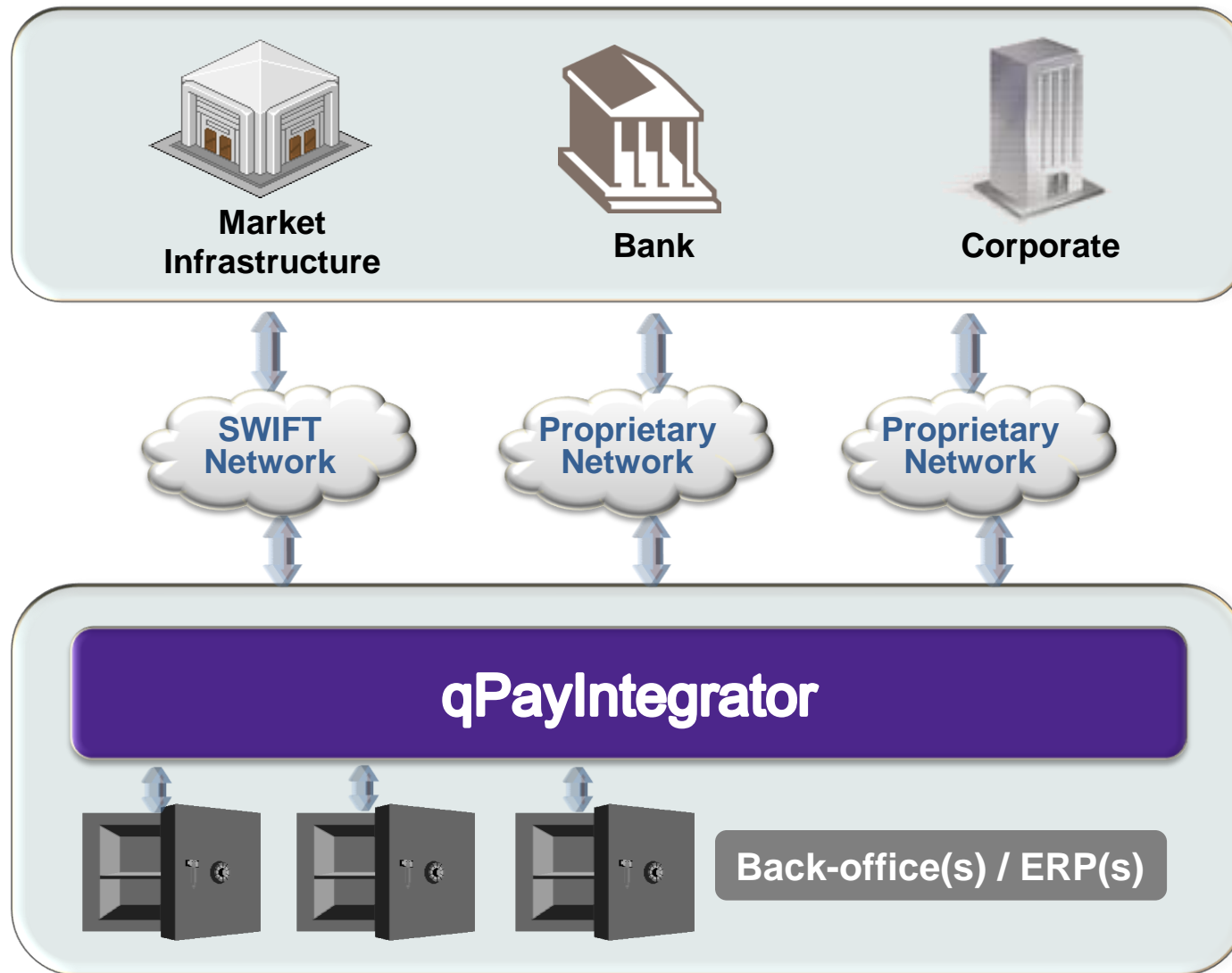
Products

qPI

FMA

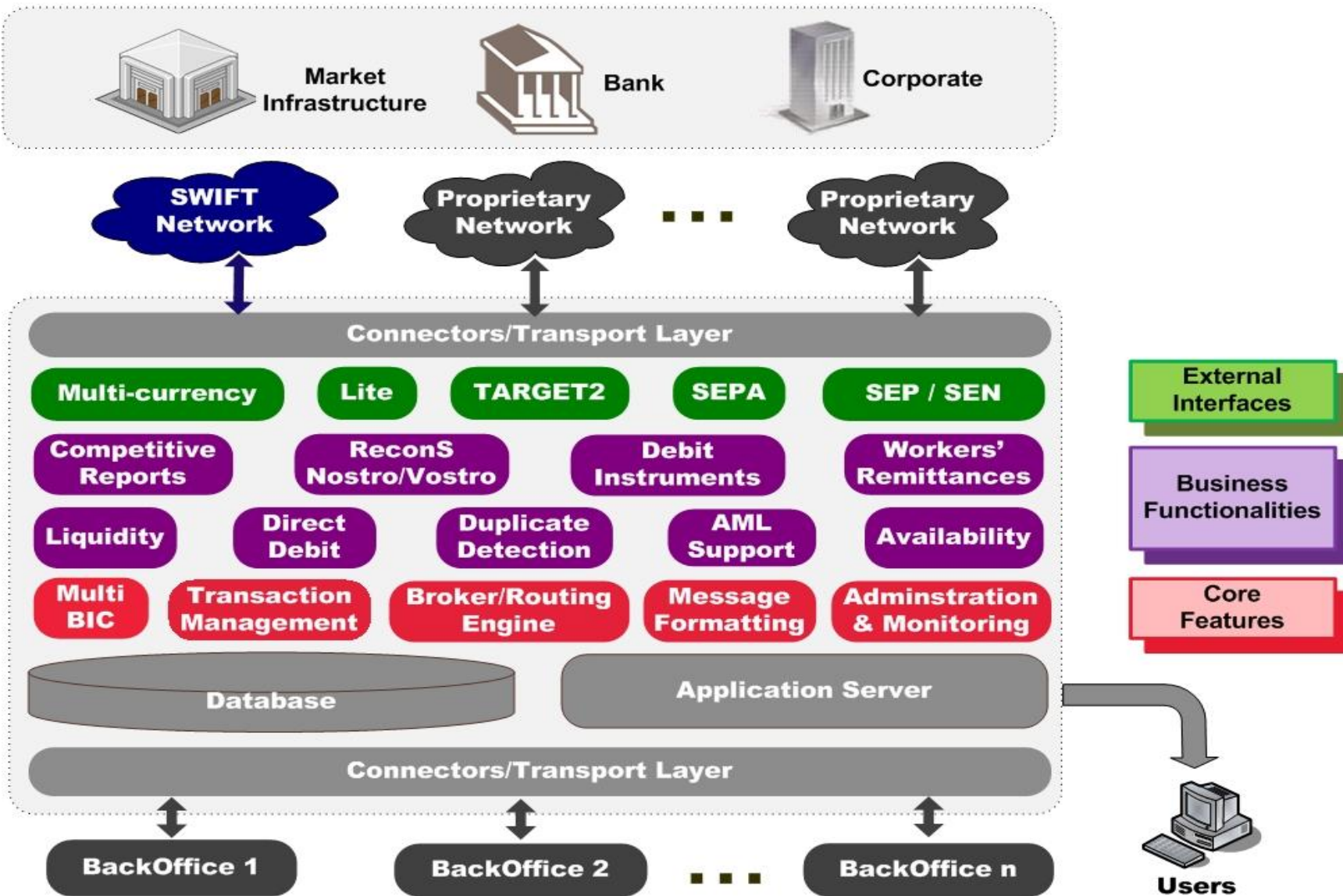
Esfera

qPI Positioning



Bank / Corporate

qPI Outline



Real time funds transfer management and processing application, with a core providing:

- technical integration between different business applications
- data conversions to/from different formats
- message routing and archiving
- duplicate detection and investigation

qPI-ML: Real-time cash reports and forecasts

ReconS: Accounting reconciliation

qPI-AML: Transactions filtering

qPI-TR: Competitive reports and early alerts

qPI-FMA: Resilience & monitoring

PAYaaS: Fully managed online service

qPayIntegrator

qPI-SEP: Access to market infrastructures

qPI-DD: Direct Debit processing

qPI-DI: Debit Instruments processing

qPI-SEPA: SCT & SDD compliance

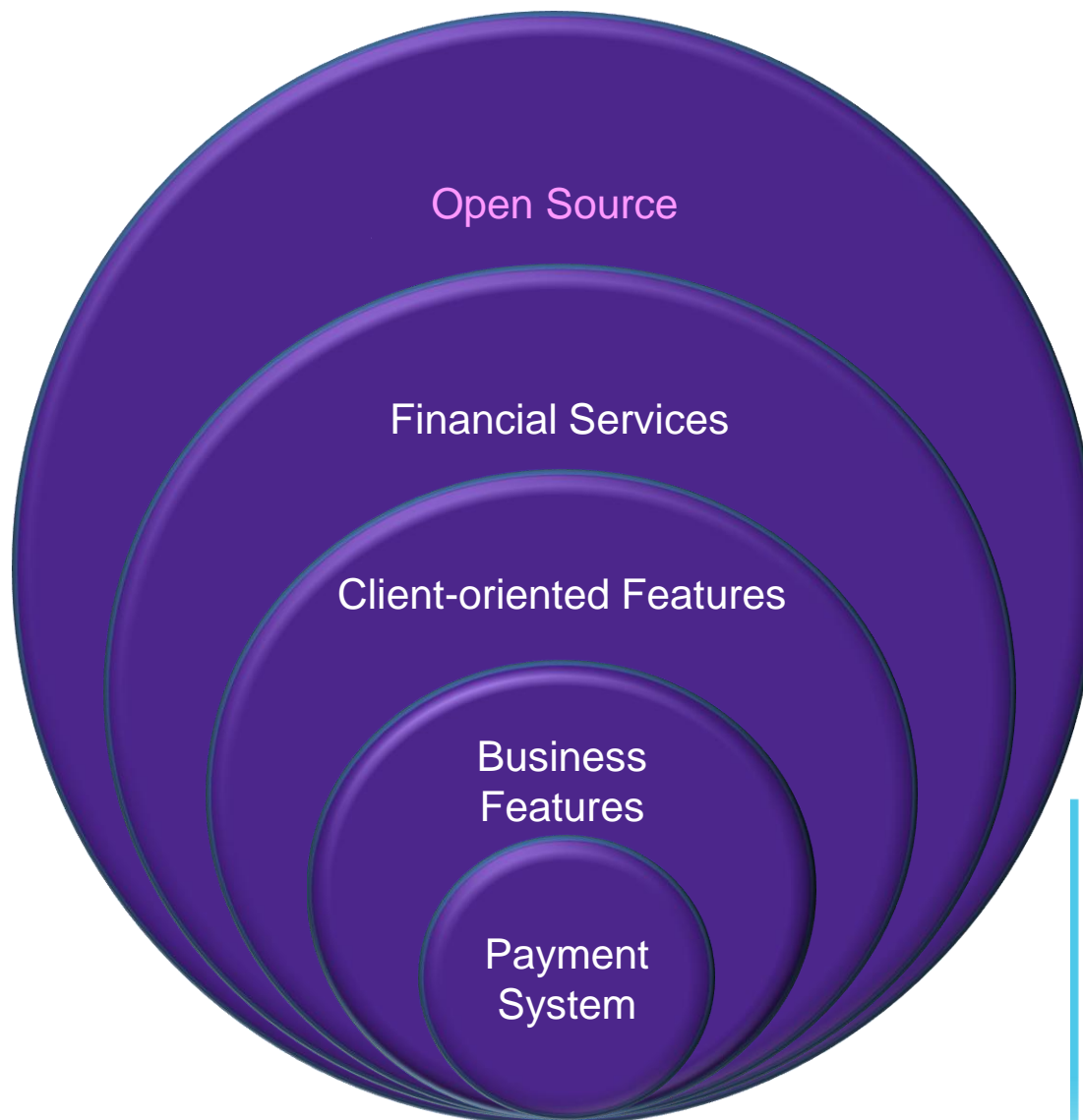
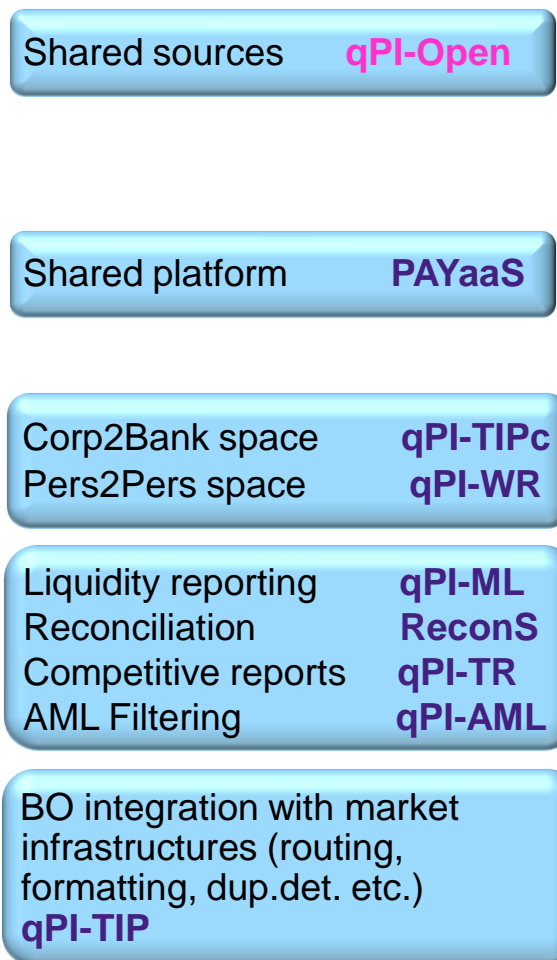
qPI-WR: Remittances management

qPI-TREZ: Treasury

qPI-AT: Automatic testing

SWIFTRReady SEPA
(in 2008 and 2009)

SWIFTRReady Workers' Remittances
(in 2010 and 2011)



Object:

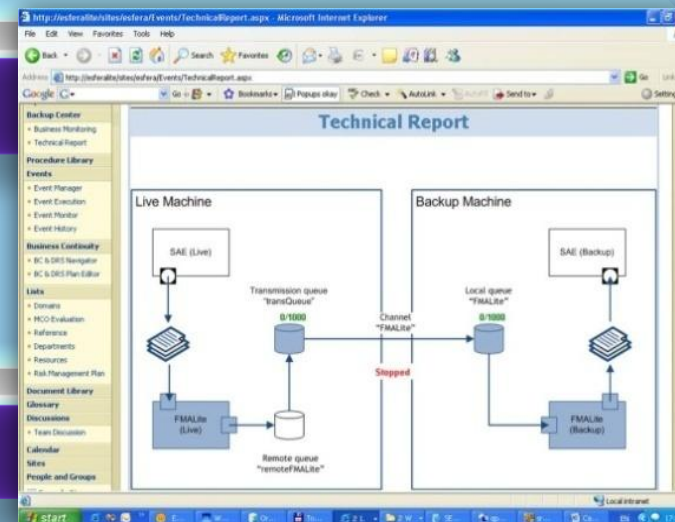
- Business continuity and disaster recovery solution for SWIFT departments

Components:

- Transaction mirroring engine
- Monitoring subsystem
- Procedures & events management subsystem

Main features:

- Business continuity in geographically separated locations (transaction mirroring, error detection and automated notification, quick disaster recovery, data integrity and consistency, flexible and scalable configurations)
- Subsystem of event & procedure management, for both planned/not planned events
- Electronic plan of operational continuity and disaster recovery
- Subsystem for transaction monitoring

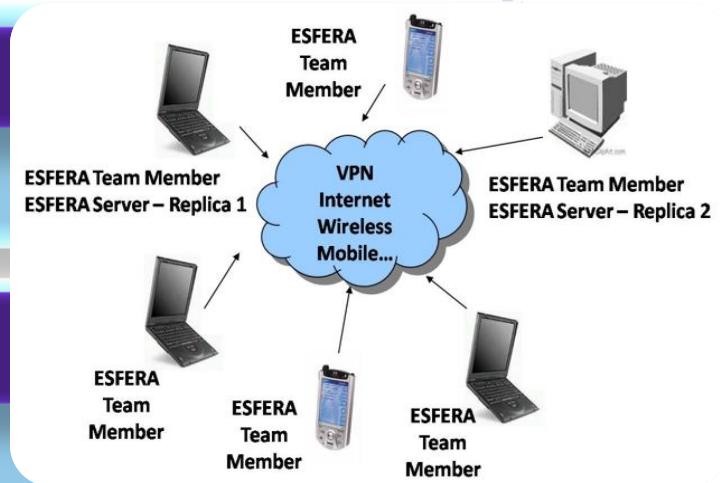


Object:

- Process, resources and operational risk management

Main features:

- Processes, resources and operational risk aggregated management, including e-learning support, document flow organizing, tracing and control for current operations, performance and individual/group responsibilities, fulfillment measuring (according to client's policies and work methodologies), best practices implementation concerning business as usual processes or those applicable in exception situations (including disasters) in order to ensure business continuity.



Platforms - today available on two technological platforms:

- IBM® Lotus® Domino®
- Microsoft® SharePoint®

Agenda

- 1 Who we are
- 2 Products
- ➔ 3 Solutions

Solutions

For Banks

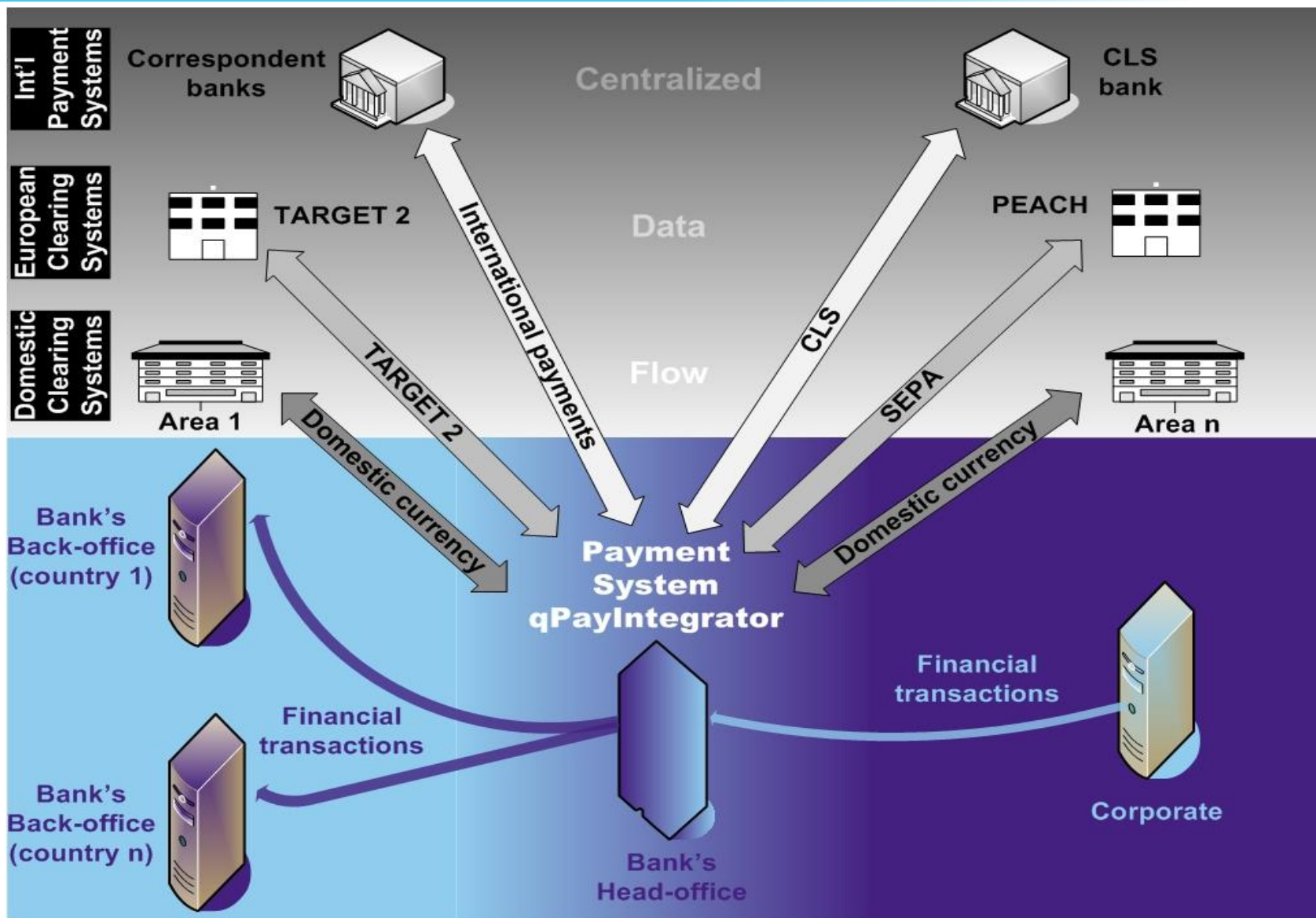
For Public Administration

For Corporations

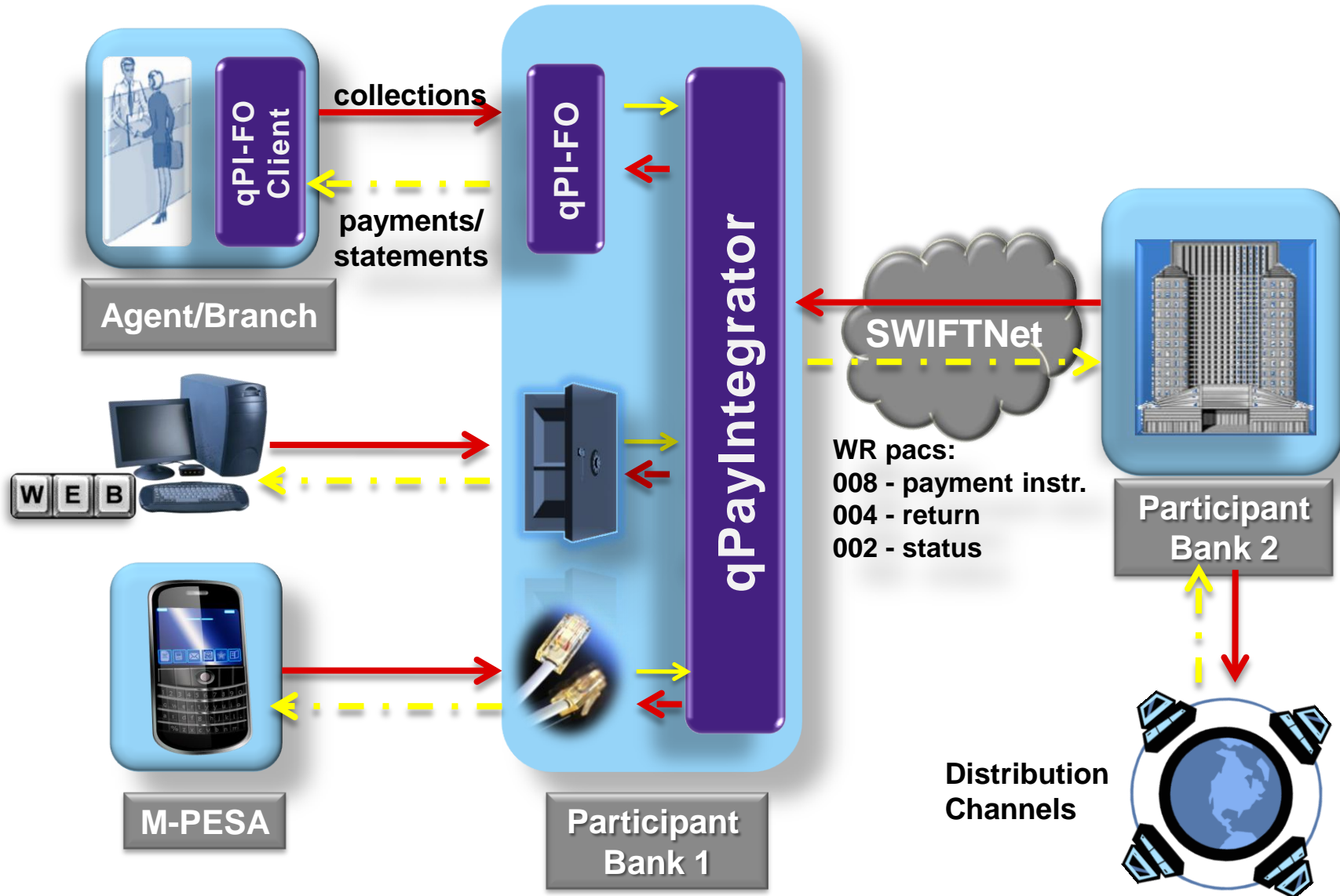
For Micro-finance

For Service Bureaus

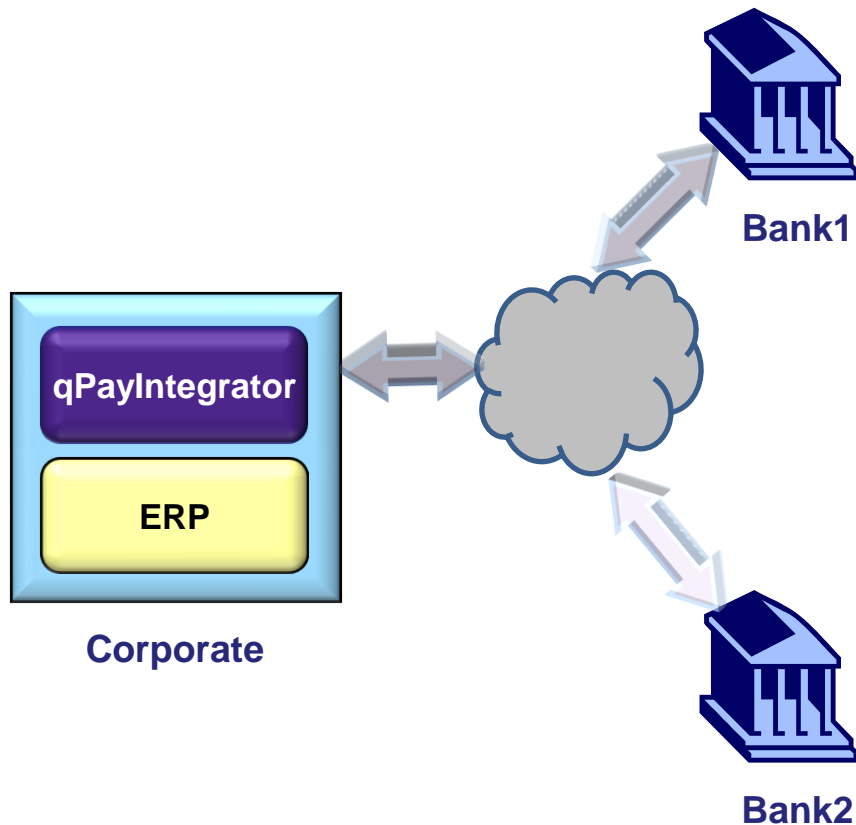
For Banks: Payment System



For Banks: Workers' Remittances



For Corporations



A centralized system for managing financial operations

Centralized payments management

Cash visibility

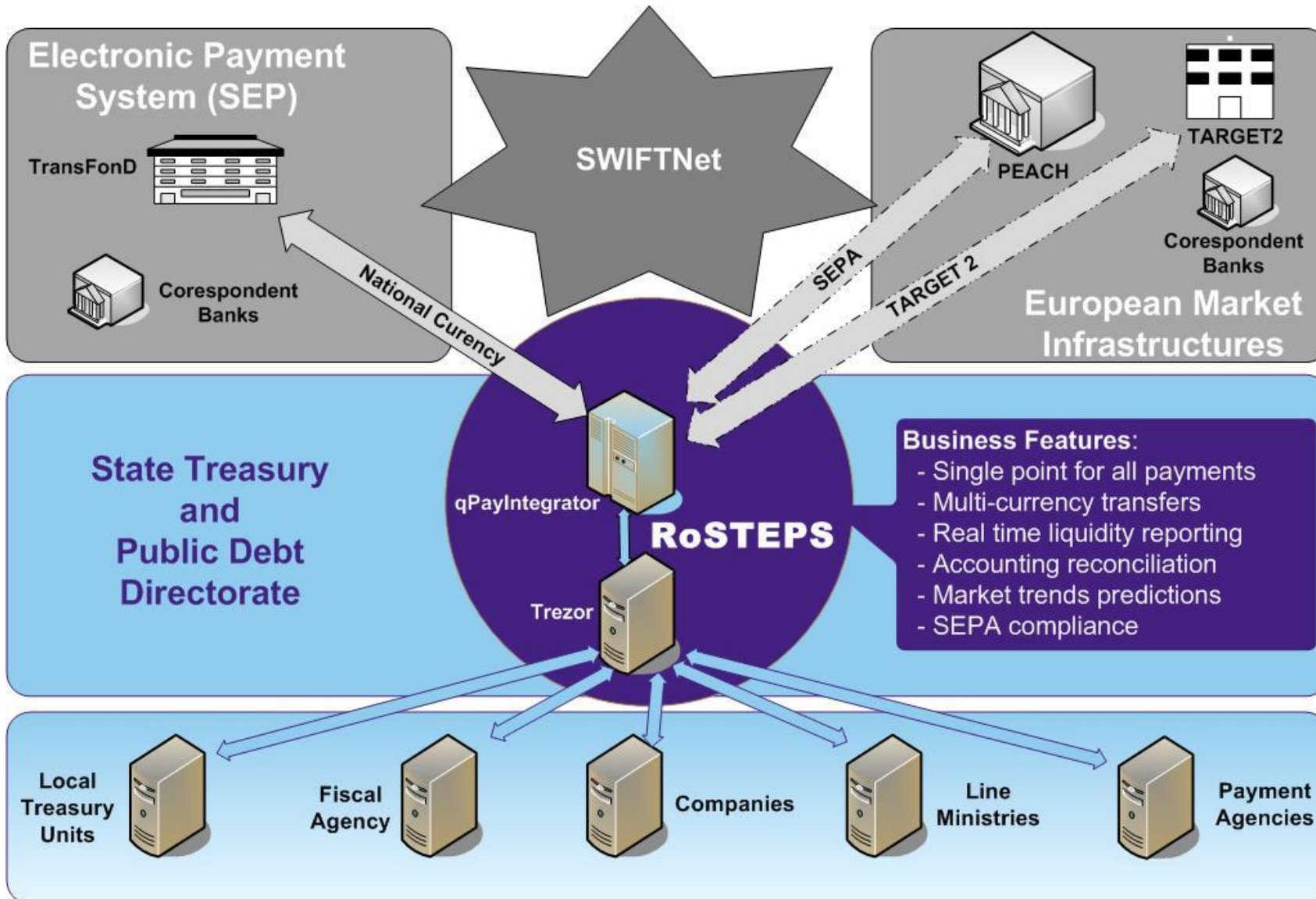
Statement reconciliations with AP/AR

Collection channels integration

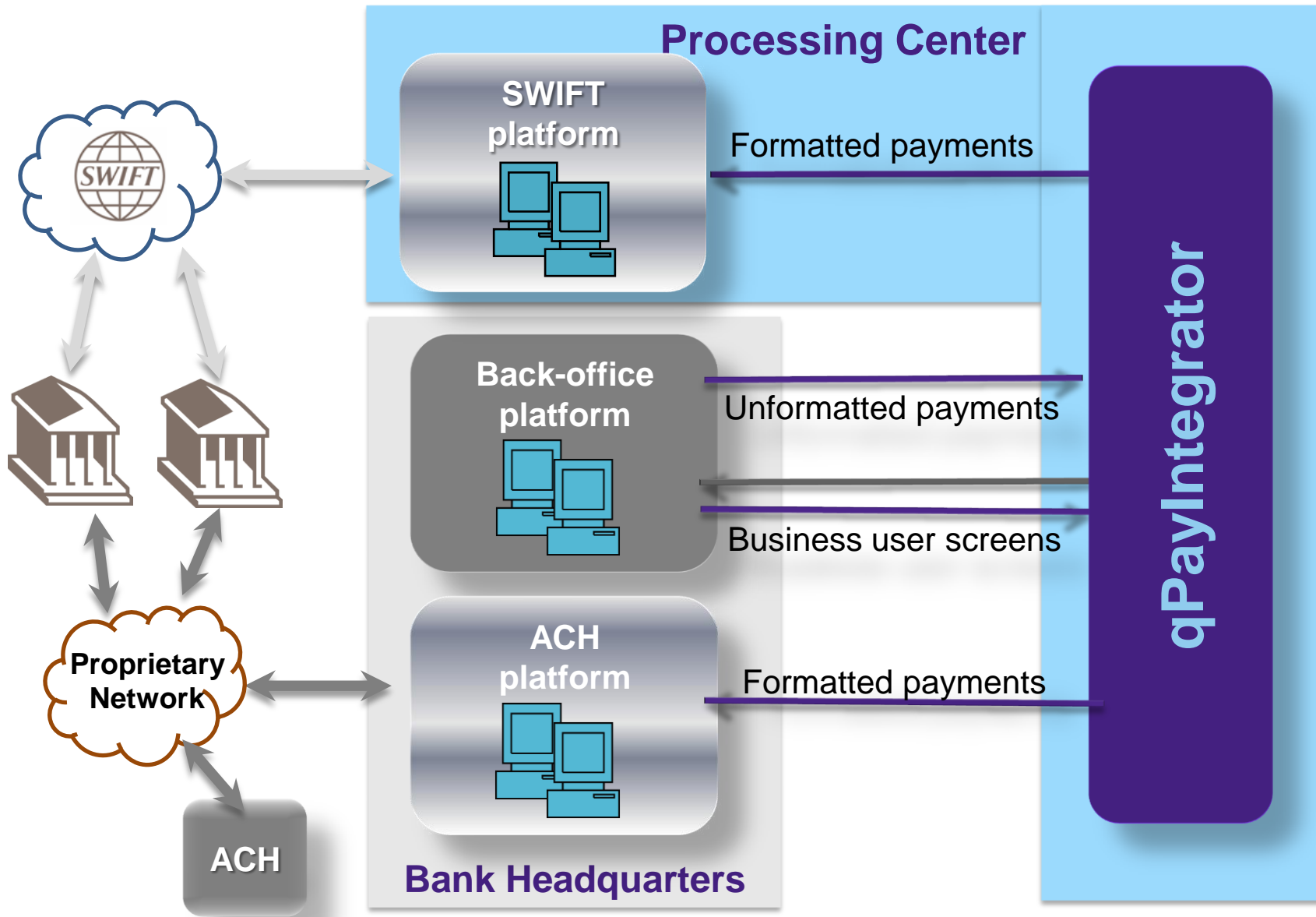
Centralized loan management

Risk containment

For Central Administration



For Service Bureaus: PAYaaS



Please contact us for more detailed information

Partnership frame: Răsvan Stănescu (rasvan.stanescu@allevo.ro)

Sales & marketing: Ion Știrbăț (ion.stirbat@allevo.ro)

Product development: Horia Beșchea (horia.beschea@allevo.ro)

Professional services: Sorina Bera (sorina.bera@allevo.ro)

Business contact: Dan Anghelescu (dan.anghelescu@allevo.ro)

Phone/fax: (0040) 21 255 45 77

Allevo website: <http://www.allevo.ro>

Allevo blog: <http://www.allevo.ro/company/blog.aspx>

Allevo twitter: <http://twitter.com/A11evo>